



ANGDAAN-JEEVAN SANJEEVANI ABHIYAAN

2025-26



1 donor can save up to **8 lives**



1 heart

2 lungs

1 liver

1 pancreas

2 kidneys

intestines

The **same donor** can also save or improve the lives of up to **50 people** by donating tissues and eyes.

अंगदान-जीवनदान

जीवनदान-महादान

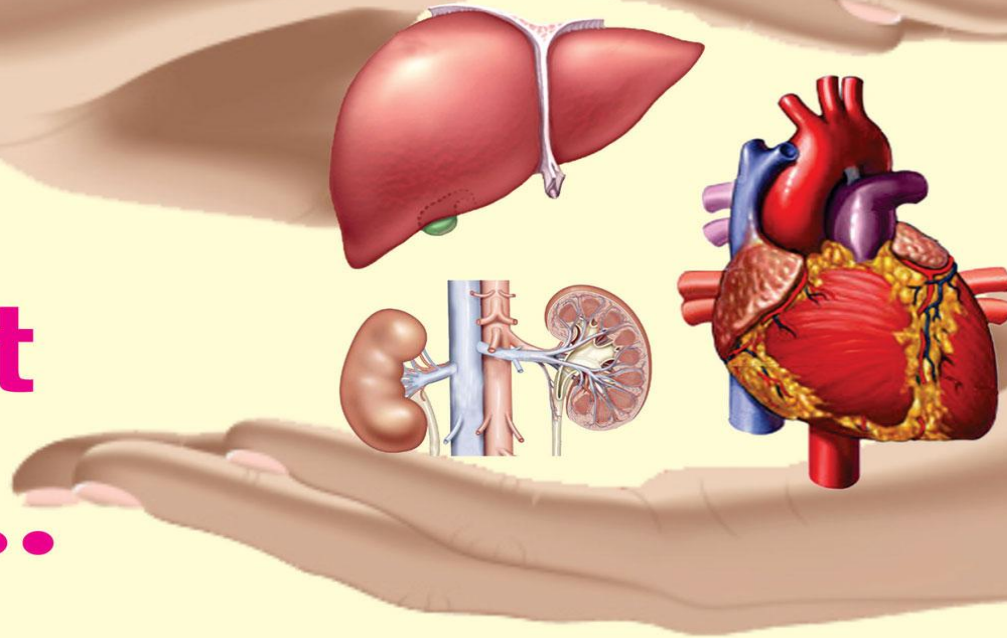
National Organ & Tissue Transplant Organisation (NOTTO)

Website: www.notto.gov.in

Helpline: 1800-11-4770 

**Become an
Organ
Donor**

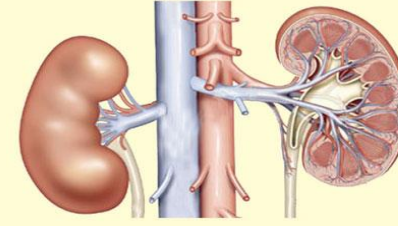
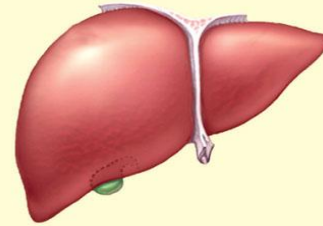
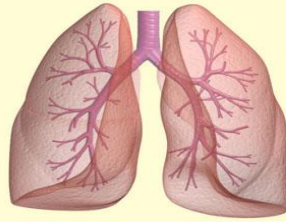
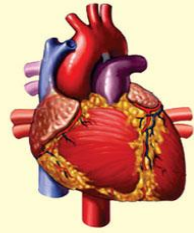
**Give
the Gift
of Life...**



National Organ & Tissue Transplant Organisation (NOTTO)

Website: www.notto.gov.in

Helpline: 1800-11-4770 

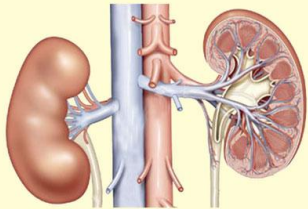
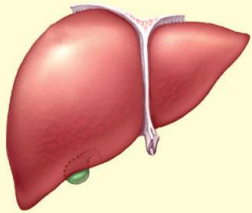
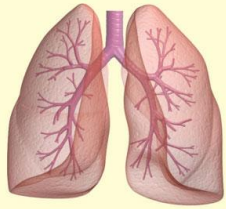
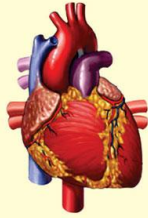


National Organ & Tissue Transplant Organisation

*I AM A
DONOR*

Let us Pledge
to Donate
Organs
for Saving
Lives...

For more information please visit: www.notto.gov.in, or  1800-11-4770



I would like to help someone after my life to live



Will you ?

National Organ & Tissue Transplant Organisation (NOTTO)

For more information please visit: www.notto.gov.in, or  1800-11-4770

I will Gift my Organs & Tissues



To Save Lives



National Organ & Tissue Transplant Organisation (NOTTO)

For more information please visit: www.notto.gov.in, or  1800-11-4770

NATIONAL ORGAN & TISSUE TRANSPLANT ORGANISATION (NOTTO)

ORGANS & TISSUES WHICH CAN BE DONATED AFTER DEATH

ORGANS

Lungs

Heart

Liver

Pancreas

Kidneys

Small Intestine

TISSUES

Corneas

Skin

Heart valves

Bone

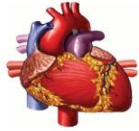
Cartilage/
ligaments



NATIONAL ORGAN & TISSUE TRANSPLANT ORGANISATION (NOTTO)

What Organs can be donated?

Currently, the following organs can be donated and transplanted:



Heart - A muscular organ that pumps blood through the body. Heart transplant is used to help those suffering from heart failure and babies born with heart defects.



Liver - An organ that secretes bile and is active in the formation of certain blood proteins and in the metabolism of carbohydrates, fats, and proteins. Liver transplant is used to treat various conditions which cause liver failure, such as cirrhosis or liver cancer.



Kidneys - A pair of organs that maintain proper water and electrolyte balance, regulate acid-base concentration, and filter the blood from metabolic waste, which is excreted as urine. A kidney transplant may be recommended for those who have been diagnosed with end stage kidney disease.



Lungs - A pair of spongy organs that remove carbon dioxide from the blood and provide the oxygen. Lung transplants are recommended for those with severe lung disease. Sometimes there is a combined heart and lung transplant.



Pancreas - A long, irregularly shaped gland which lies behind the stomach and helps in the digestion of proteins, carbohydrates, and fats. Pancreas transplant is indicated for those with insulin-dependent Type-I diabetes.



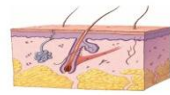
NATIONAL ORGAN & TISSUE TRANSPLANT ORGANISATION (NOTTO)

What Tissues can be donated?

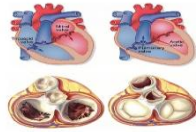
The following Tissues can be donated and transplanted:



Cornea - The outer curved transparent tissue covering the iris and pupil. Corneal transplant is a common procedure used to restore vision for those with eye diseases and corneal infections.



Skin - A tissue which protects the body from infection and injury. Skin transplants, referred to as skin grafts, are used to treat severe burns, extensive wounds and skin loss due to infection.



Heart Valves - Tissues that prevent the back flow of blood into the heart. Heart valve transplants are used to treat malfunctioning heart valves caused by infections, birth defects and aging. When an entire heart is not usable, heart valves are removed from the heart and are used for transplants.



Bones - Connective tissues that are dense, semi rigid, porous, and calcified forming the major portion of the skeleton of most vertebrates. Bone transplantation is done for reconstruction related to trauma, tumours, disease and fractures and to fill defects. For the recipient, it restores mobility, decreases pain, prevents amputation and collapse of bone.

Tendons- Tissues which attach muscles to bones. Tendon transplants are recommended for patients who have lost muscle function due to nerve injury or damage to tendons. It improves the recipient's life and makes it pain free.



PLEDGE FOR ORGAN DONATION

Register for organ and tissue donation through NOTTO's (NATIONAL ORGAN & TISSUE TRANSPLANT ORGANIZATION) web portal i.e. <https://notto.abdm.gov.in/> and join the pious movement of saving others life through organ donation.

Helpline: 1800-11-4770